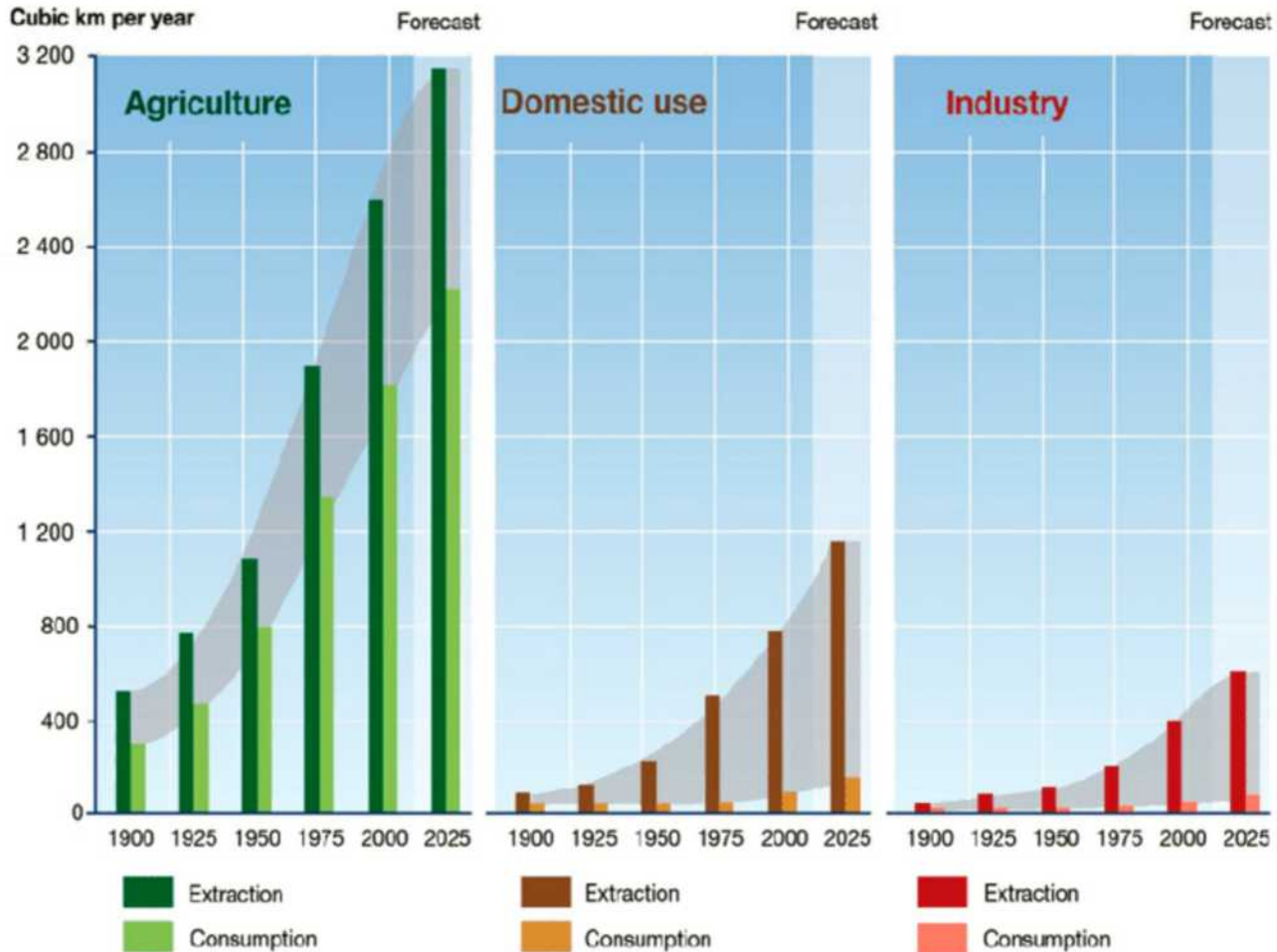




ELLEN MACARTHUR FOUNDATION





NEW YORK TIMES BESTSELLER

DRAWDOWN

THE MOST COMPREHENSIVE
PLAN EVER PROPOSED TO
REVERSE GLOBAL WARMING
EDITED BY PAUL HAWKEN



Top 20

- *5 energy production*
- *8 food production*
- *4 land use*

FOOD SPEND



NEGATIVE IMPACTS WORTH

CONSUMPTION



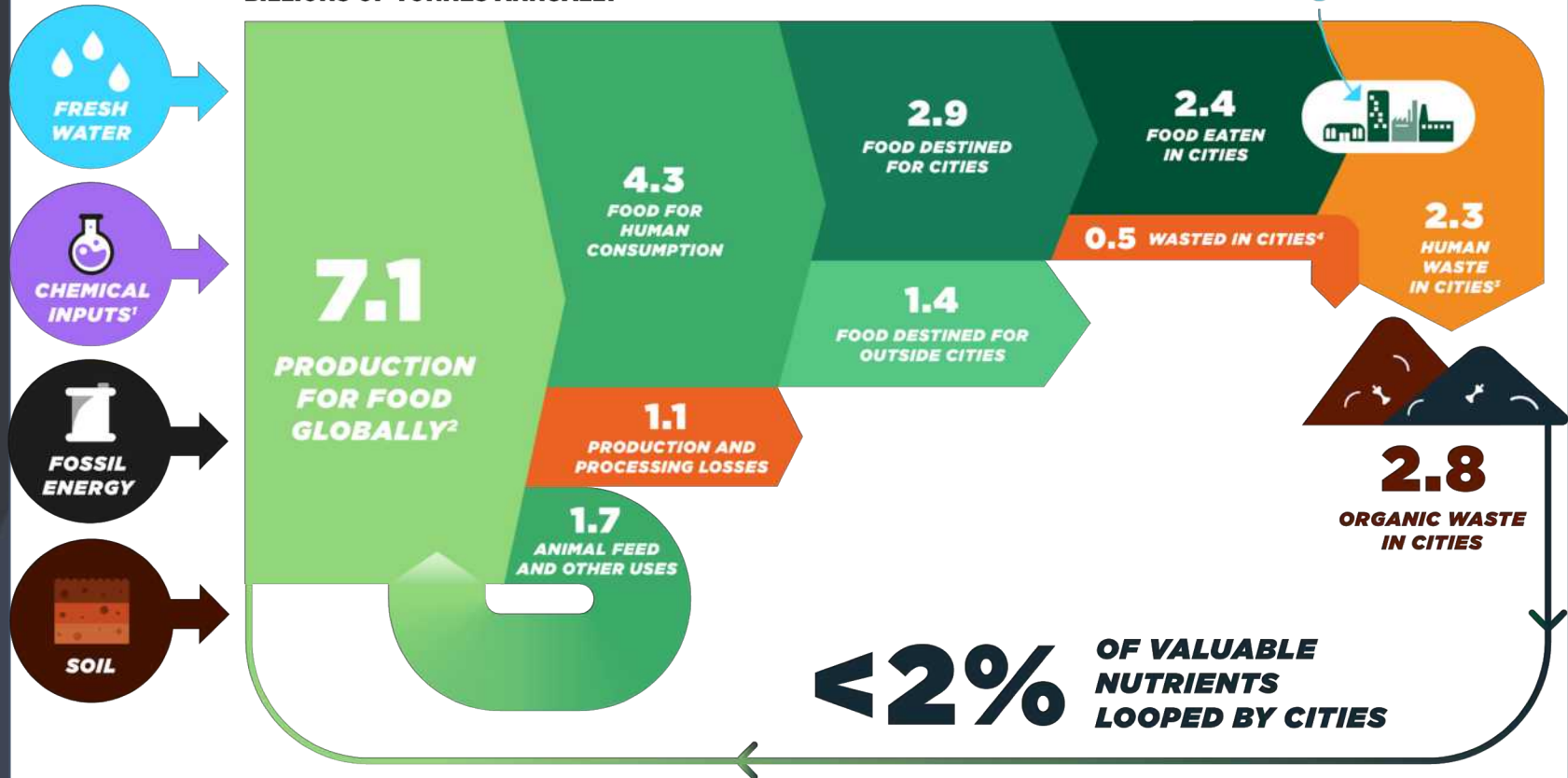
PRODUCTION



*Excluding obesity; **Due to diet

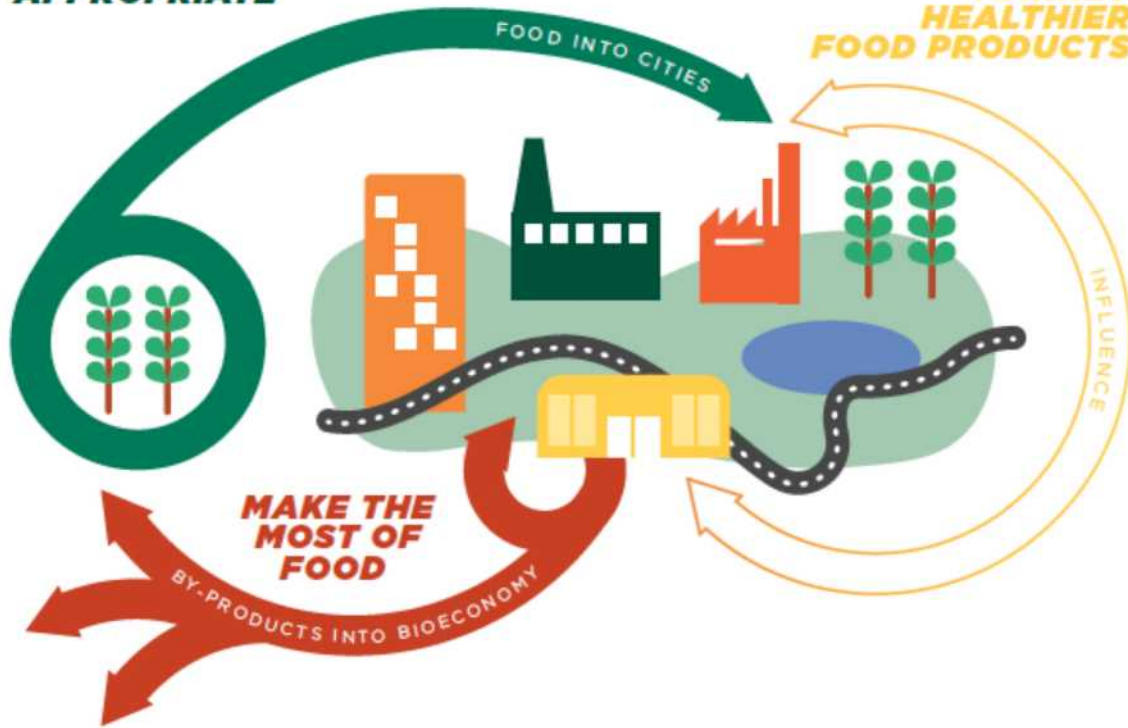
Based on Cities and Circular Economy for Food analysis – for details see Technical Appendix.

BILLIONS OF TONNES ANNUALLY



**SOURCE FOOD GROWN
REGENERATIVELY,
AND LOCALLY WHERE
APPROPRIATE**

**DESIGN AND
MARKET
HEALTHIER
FOOD PRODUCTS**

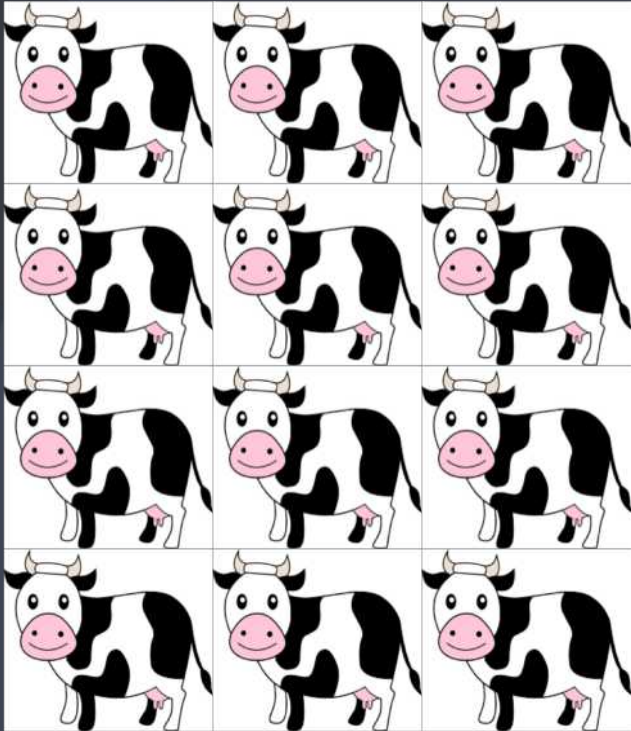


City food actors

- *Brands*
- *Restaurants*
- *Hotels*
- *Retailers*
- *Municipalities*
- *Waste processors*
- *etc*

Regenerative agriculture

Microbe mass equivalent per acre



v.





Every extra 1% soil carbon stores 144,000 litres/acre
(Glen Morris, USDA)



*"Smallholder farmers feed 70% of the world using 30% of the resources"
(ETC Group)*

Zero budget natural farming



Reduced

- *debt*
- *irrigation*

Increased

- *yields*
- *nutritional value*
- *resilience*
- *food security*





80 Wp

Solar panel capacity



7.5 meters

Suction depth



10 meters

Maximum lift



Over 12,000 L/day

Volume of water that can be pumped for irrigation



2 speed

Simple switch allows you to pump on sunny, overcast days, early morning AND late into the evening

Suitable for use with both DRIP irrigation and SPRINKLERS

www.futurepump.com



Futurepump

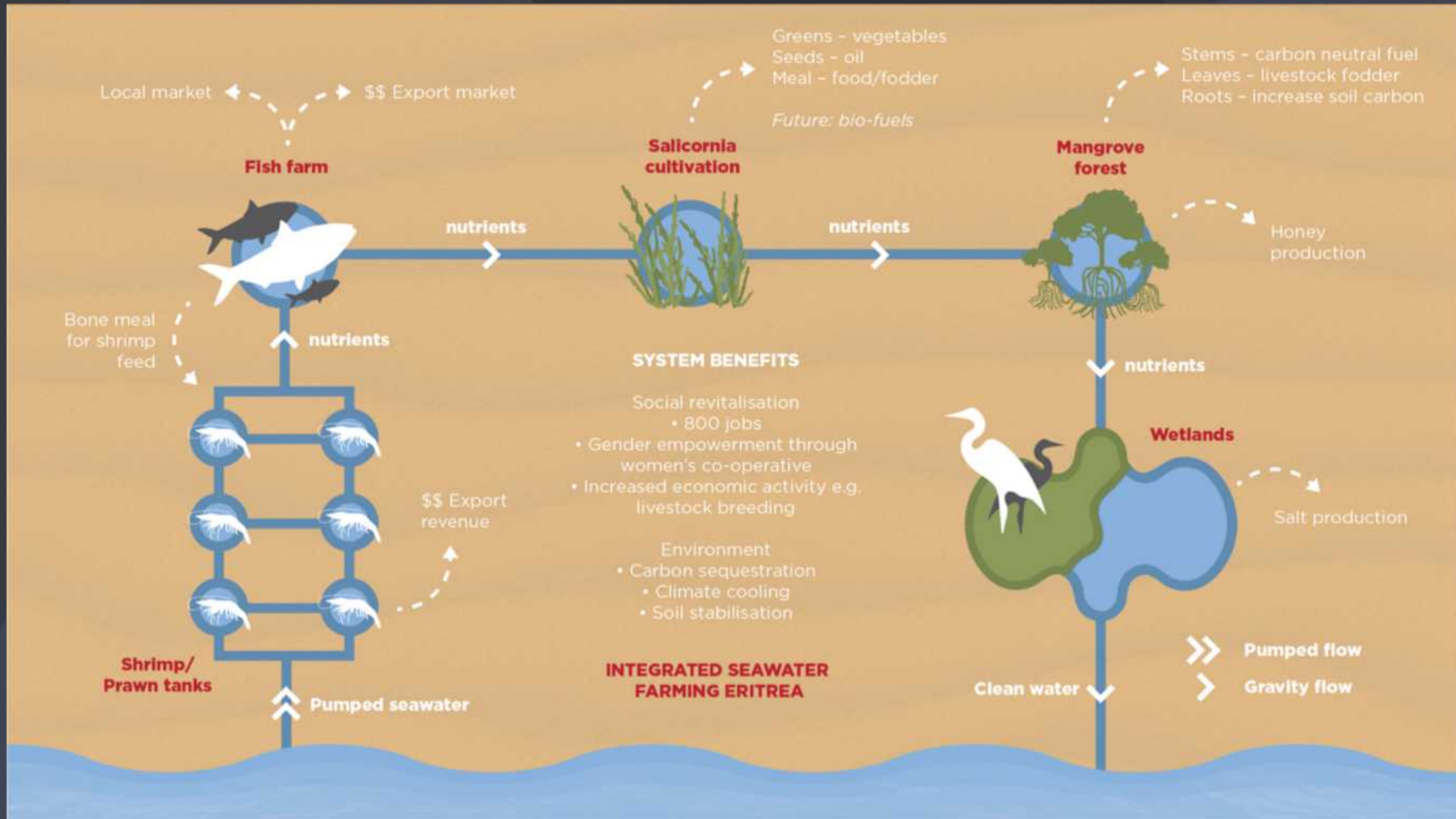


Farmland restoration









Business opportunities in regenerative/restoration farming

- Better mechanical equipment
- Small-scale mechanisation systems incl solar/precision irrigation
- Software for new business models
- High quality soil enhancers e.g. pelletised biosolids
- Biostimulants/biofertilisers
- Appropriate cold chain systems
- Land restoration products
- Seawater agriculture

Finance as an enabler

Upper Tana Water Fund

